



carbon
undo the damage

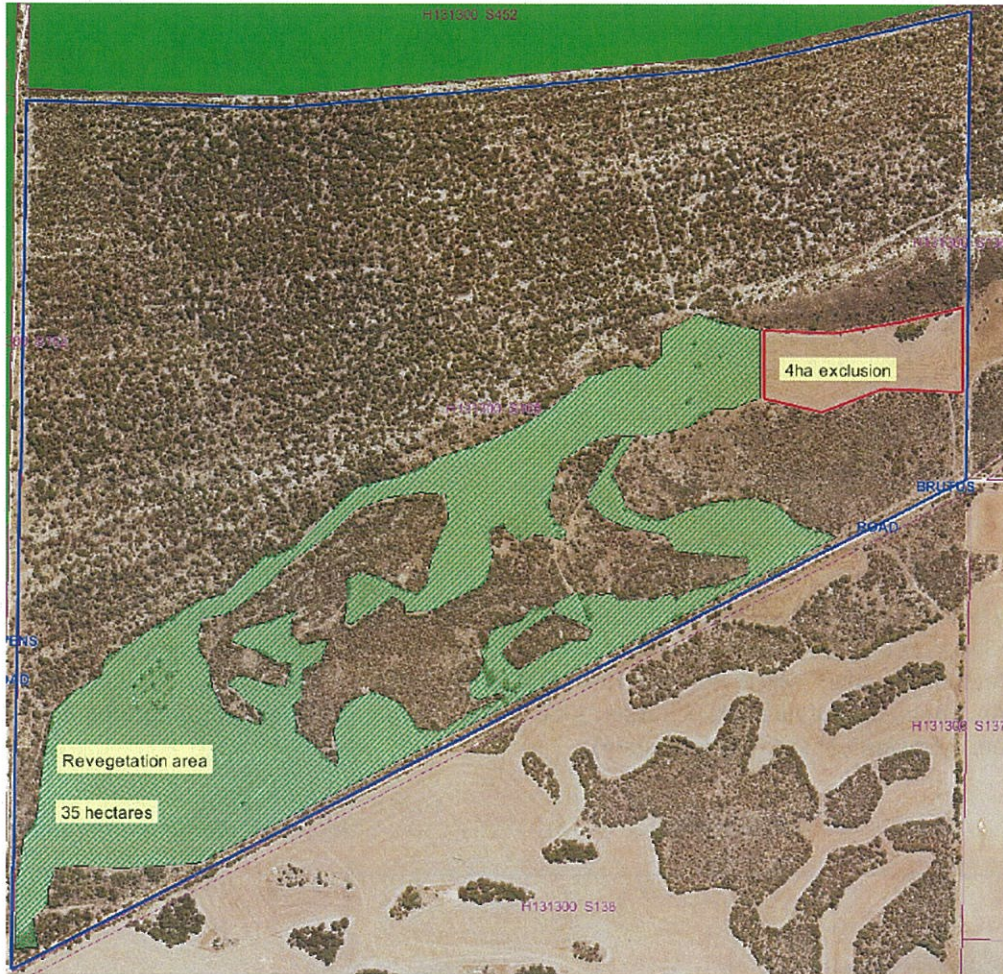
Site	Levens Beach, Southern Yorke Peninsula
Protection	30 years
Registered on Title	Yes
Site Type	Trees For Carbon
Planted	23 rd & 25 th August 2011
Method	Direct Seeding
Target	35,000 plants
First audit due	1 st August 2014
Funded by	Aged & Community Services SA&NT, Bede Polding College, Birkis4you, Blue Glider, Castleford (Whyalla) Vet, Church Point Ferry Service, Complete Removals, Crouch wedding guests, D Hilton, Elderton Wines, E Sullivan, J Bayly, Keystone Printing, MBITS Printing, Neways International, Nigel Willoughby, P & B Knill, P & S Edmondson, RAA, Rotary Club of Adelaide, S Hunter, S Kanck, TFL Donors, Phillip Hudson Consulting P/L, A Templer, E Sullivan, S Edwards, N Kapulski (still open)

About the property:



This 175 hectare property lies on the north coast of the foot of Yorke Peninsula near Point Souttar. It is predominantly remnant vegetation in the process of being protected under a Heritage Agreement with 40 hectares of cleared land that was used for cropping and livestock. 35 hectares is being revegetated under the TFL Carbon program. Adjacent on the western side is Levens Beach Conservation Park, and this important revegetation project will add substantially to the habitat of the area and buffer and link the fragmented remnants on the southern side of the property.

Planting location on site:



Site details

The area under revegetation lies immediately behind a dunal system running north-east to south-west along the coast. The dominant species present include *Allocasuarina verticillata*, *Bursaria spinosa*, *Eucalyptus porosa*, *Eucalyptus diversifolia* and *Melaleuca lanceolata*

Species planted on site:

Acacia species: *cupularis*, *leiophylla*, *longifolia* *sophorae*, *nematophylla*,
Allocasuarina verticillata
Bursaria spinosa
Callitris gracilis
Eucalyptus species: *diversifolia*, *porosa*
Melaleuca lanceolata
Templetonia retusa

PHOTOS OF SITE PRIOR TO SOWING



A well vegetated dunal system runs through the middle of the property



Parts of the remnant vegetation at the base of the sand dune with *Lepidosperma gladiatum* (Sword rush)



The revegetation will buffer fragmented remnant Mallee and tea-tree scrub



Looking west through previously cropped land set for revegetation

DIRECT SEEDING

Direct seeding of this site took place on the 23rd and 25th August 2011. Conditions were excellent, with good mild weather and soil moisture, with the rows having been sprayed prior to seeding on 12th July 2011. More than 82km of rows were seeded, using approximately 44kg of seed.



Direct seeding (25-Sep-11)



David Hein with landholders Trevor Pengilly and Pam Brookman (25-Sep-11)



Direct seeding with the quad bike seeder (25-Sep-11)



A photo-point monitoring cairn (25-Sep-11)

Next update due: March 2012